



# St Berchmans College

Founded 1922

**AUTONOMOUS**

College with Potential for Excellence | Reaccredited by NAAC with A Grade

# STRATEGIC PLAN DOCUMENT 2023-2033



St. Berchmans College in Changnacherry has a rich legacy of academic excellence, character development, and community service. As we look ahead to the year 2033, our vision is to build upon our strong foundation and further enhance the college's reputation as a premier institution of higher education. This vision document outlines our aspirations and key focus areas for the next decade.

### **Academic Excellence:**

St. Berchmans College aims to be a hub of intellectual growth and innovation. By 2033, we envision a college that fosters a dynamic learning environment, leveraging cutting-edge technologies and interdisciplinary approaches. Our curriculum will be continually updated to align with industry trends and global demands. We will promote research and encourage faculty and students to engage in collaborative projects that address societal challenges. The college will strive for excellence in all fields, emphasizing critical thinking, creativity, and problem-solving skills.

### **Holistic Development:**

We recognize the importance of holistic development in shaping well-rounded individuals. Our vision for 2033 is to create a college that nurtures not only academic growth but also personal, social, and emotional development. We will provide comprehensive support services to help students thrive in all aspects of their lives. This includes mentoring programs, career counselling, leadership development initiatives, and opportunities for community engagement. We will foster a culture of inclusivity, respect, and empathy, promoting a strong sense of belonging and social responsibility among our students.

### **Infrastructure and Facilities:**

To facilitate an optimal learning environment, St. Berchmans College will prioritize the development and maintenance of state-of-the-art infrastructure and facilities. By 2033, we aim to provide modern classrooms, well-equipped laboratories, and updated libraries that offer a wide range of digital resources. We will enhance our sports facilities, including indoor and outdoor spaces, to encourage physical fitness and extracurricular activities. Our campus will be eco-friendly, incorporating sustainable practices and green spaces that inspire creativity and relaxation.



### **Collaboration and Global Engagement:**

In an increasingly interconnected world, St. Berchmans College recognizes the importance of collaboration and global engagement. By 2033, we aspire to establish strong partnerships with leading educational institutions, research organizations, and industries worldwide. These collaborations will provide our students and faculty with opportunities for international exchange programs, joint research projects, and exposure to diverse cultures and perspectives. We will prepare our students to be global citizens, equipped with the skills and knowledge to navigate a rapidly evolving global landscape.

### **Alumni Engagement and Philanthropy:**

Our vision for 2033 includes fostering a vibrant alumni network that actively contributes to the college's growth and development. We will establish robust channels of communication and engagement, keeping our alumni connected with each other and the college. Through mentorship programs, guest lectures, and alumni-driven initiatives, we will harness the expertise and resources of our alumni to support the college.



## OUR VISION

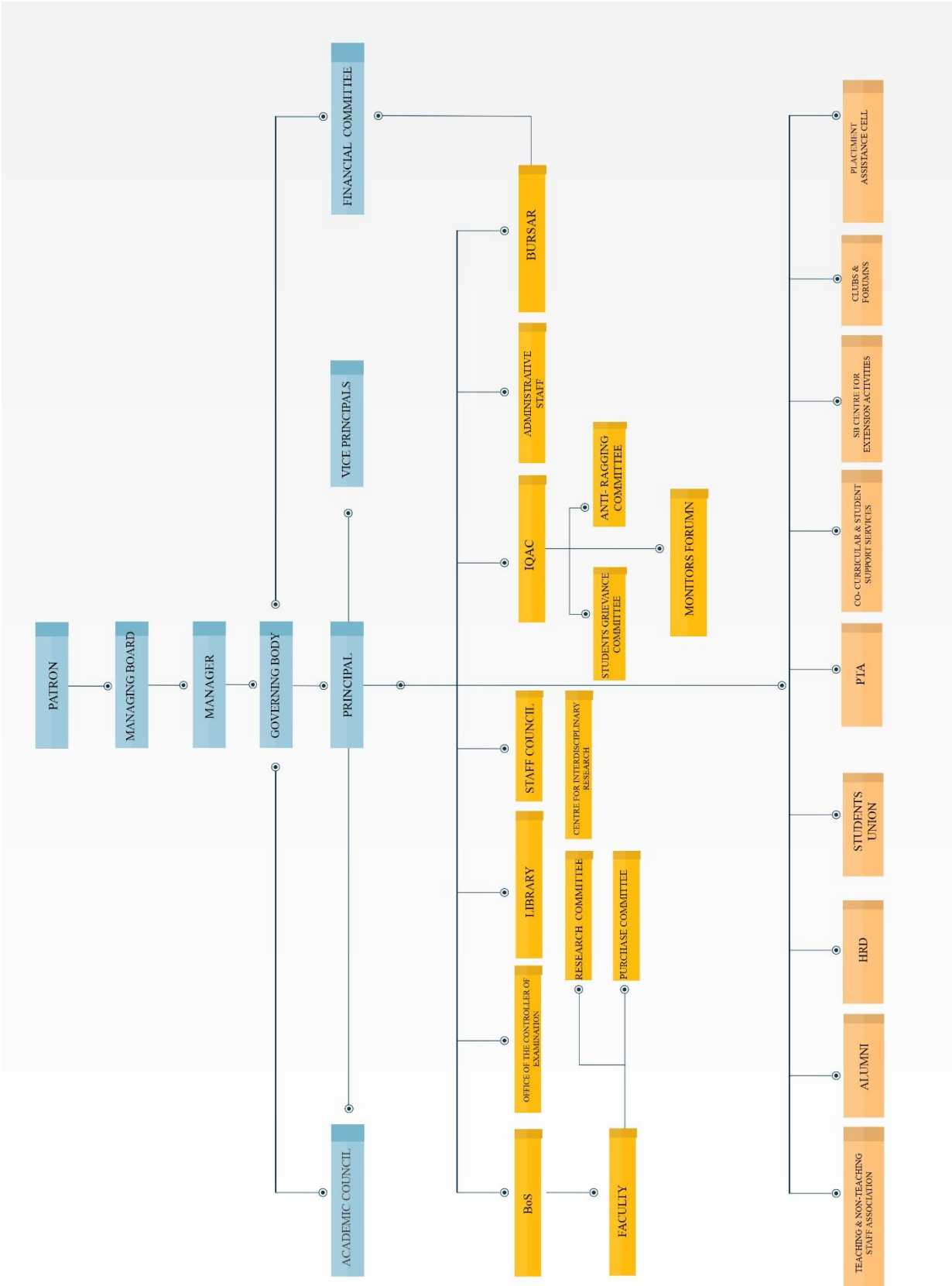
We are committed to be a global institution of excellence promoting integral human development through value-based teaching, learning, research and innovation.

## OUR MISSION

True to the vision of Christian Charity, we are devoted:

- Fostering academic development by equipping the learners with critical thinking, communication, creativity, teamwork and skill development.
- Inculcating the spirit of human dignity, gender equality, social inclusiveness, and environmental stewardship.
- Promoting a culture of interdisciplinarity, scientific approach, technological competence and life-long learning.
- Sustaining a conducive atmosphere for scholarship, research, collaboration and entrepreneurship.
- Building mutual partnership among stakeholders for societal transformation and nation building







## SWOT

STRENGTH	OPPORTUNITIES
<ul style="list-style-type: none"> <li>➤ Established reputation and rich legacy of the institution.</li> <li>➤ Effective leadership and efficient management practices.</li> <li>➤ Comprehensive and robust academic programs and curriculum.</li> <li>➤ Enhanced curriculum with diverse short-term programs.</li> <li>➤ Emphasis on quality teaching and learning practices.</li> <li>➤ Highly qualified and experienced faculty members.</li> <li>➤ Well-developed infrastructure and state-of-the-art learning facilities.</li> <li>➤ Active and supportive alumni network.</li> <li>➤ Strong focus on quality research and publications.</li> <li>➤ Successful academic and industrial collaborations.</li> <li>➤ Vibrant sports and arts culture</li> </ul>	<ul style="list-style-type: none"> <li>➤ Introduce new courses and programs aligned with university regulations.</li> <li>➤ Engage distinguished alumni for guest lectures, mentorship, and industry collaborations.</li> <li>➤ Foster collaborative multidisciplinary research with prestigious institutions following NEP 2020 guidelines.</li> <li>➤ Secure grants for innovative interdisciplinary projects from funding agencies.</li> <li>➤ Facilitate faculty development through MOOCs on the SWAYAM platform.</li> <li>➤ Forge industry partnerships for skill development and placements.</li> <li>➤ Develop high-quality E-content for widespread student access.</li> <li>➤ Offer continuing education programs aligned with industry trends.</li> <li>➤ Encourage public participation in knowledge dissemination.</li> </ul>



WEAKNESS	CHALLENGES
<ul style="list-style-type: none"> <li>➤ Ensuring academic rigor while addressing student welfare and mental health.</li> <li>➤ Limited interdisciplinary collaborations and research opportunities.</li> <li>➤ Limited international exposure and collaborations</li> <li>➤ Limited industry exposure and internships.</li> <li>➤ Financial constraints were impacting investments and resources.</li> </ul>	<ul style="list-style-type: none"> <li>➤ Limited academic autonomy under university regulations.</li> <li>➤ Insufficient government support for entrepreneurship and innovation.</li> <li>➤ Lack of research funding and support.</li> <li>➤ Balancing societal expectations with government policies.</li> <li>➤ Strategic location and resource accessibility challenges.</li> <li>➤ Implementation challenges of NEP 2020 due to regulations.</li> <li>○ Delays in approval processes for syllabi, appointments, and results.</li> <li>○ Lack of autonomy for doctoral programs constrains efficiency.</li> </ul>



## SHORT TERM KEY STRATEGIC PLAN

STRATEGY	ACTION PLAN	TARGET YEAR
<p>To be there in the top of top 20 colleges in national ranking including NIRF</p>	<ul style="list-style-type: none"> <li>➤ Enhance the curriculum by incorporating emerging trends, interdisciplinary approaches, and practical applications.</li> <li>➤ Encourage faculty to engage in research and publish in reputed journals.</li> <li>➤ Promote industry-academia collaborations and internships to bridge the gap between theoretical knowledge and practical skills.</li> <li>➤ Establish research centers or focus groups to facilitate collaborative research and publication.</li> <li>➤ Foster a research culture by providing funding for research projects and encouraging faculty to secure external research grants.</li> <li>➤ Provide a conducive environment for learning, research, and innovation.</li> <li>➤ Implement smart classrooms, virtual learning platforms, and digital resources to enhance the learning experience.</li> <li>➤ Identify employers who offer maximum salary and ensure the placements of students in such firms .if so the median salary will be the maximum.</li> </ul>	<p>2024</p>





<p>Upgrade and expand the college's technology infrastructure by investing in modern hardware, software, and networking equipment in order facilitate the integration of technology into various academic and administrative processes, improving efficiency and communication.</p>	<ul style="list-style-type: none"> <li>➤ Conduct a comprehensive assessment of the college's existing hardware and software infrastructure to identify areas that need improvement or replacement to meet the technological demands of academic and administrative processes.</li> <li>➤ Learn the excellent practices of other reputed institutions.</li> <li>➤ Consult with relevant stakeholders, including the IT department, faculty, and administration, to determine the appropriate funding for the project.</li> <li>➤ Research and identify reliable vendors for hardware and software solutions that align with the college's requirements. Obtain quotations, negotiate pricing, and select vendors based on quality, support, and value for money.</li> <li>➤ Explore opportunities to leverage cloud computing for storage, data backup, and collaboration purposes.</li> </ul>	<p>2025</p>
<p>Forge stronger partnerships and collaborations with industries and businesses in relevant sectors.</p>	<ul style="list-style-type: none"> <li>➤ Identify key industries and businesses in relevant sectors that align with the college's academic programs and research interests. Research and compile a list of potential partners based on their reputation, expertise, and areas of focus.</li> <li>➤ Create an Industry Liaison Office or designate a team responsible for developing and maintaining</li> </ul>	<p>2025</p>



	<p>relationships with industry partners. This office/team will serve as a point of contact for industry collaboration inquiries, partnership proposals, and ongoing engagement.</p> <ul style="list-style-type: none"> <li>➤ Organize networking events, career fairs, and industry-specific conferences on campus. These events will facilitate direct interaction between students, faculty, and industry professionals, allowing for potential internships, project collaborations, and employment opportunities.</li> <li>➤ Establish an Industry Advisory Board comprising representatives from key industries. This board will provide guidance and insights into industry requirements, emerging trends, and necessary skill sets.</li> <li>➤ Invite industry experts to co-teach courses or deliver guest lectures on specific topics related to their expertise. Collaborate with industry partners to offer skill certification programs that validate students' proficiency in specific industry-relevant areas.</li> <li>➤ Establish formal MoUs with selected industries and businesses.</li> </ul>	
<p>Establish much more comprehensive student support services to address the diverse needs of students – including the facility of a</p>	<ul style="list-style-type: none"> <li>➤ Conduct a thorough needs assessment to identify the specific requirements of students in terms of medical support and overall student support services.</li> </ul>	<p>2024</p>



<p>full time medical specialist</p>	<ul style="list-style-type: none"> <li>➤ Allocate resources for the establishment of comprehensive</li> <li>➤ student support services, including budgeting for hiring a full-time medical specialist.</li> <li>➤ Implement a comprehensive communication plan to inform students, faculty, and staff about the availability and benefits of the full-time medical specialist. Develop promotional materials, conduct awareness campaigns, and ensure easy access to medical services, such as establishing clear appointment procedures and operating hours.</li> <li>➤ Establish effective collaboration between the medical specialist and other existing student support services, such as counseling services, academic advising, and career guidance. Foster a multidisciplinary approach to student support, ensuring seamless coordination and referrals among different support professionals.</li> <li>➤ Regularly evaluate the effectiveness and impact of the student support services, including the medical facility.</li> </ul>	
-------------------------------------	--	--



## MEDIUM TERM KEY STRATEGIC PLAN

STRATEGY	ACTION PLAN	TARGET YEAR
<p>Encourage a research-focused culture within the college by establishing research centres in the unaided stream</p>	<ul style="list-style-type: none"> <li>➤ Conduct a comprehensive needs assessment to identify research areas of interest and potential domains within the unaided stream. This can be done through surveys, faculty consultations, and literature reviews to understand the current research landscape and identify gaps or emerging areas of focus.</li> <li>➤ Based on the needs assessment, identify specific research focus areas within the unaided stream that align with the college's strengths, expertise, and resources. Consider areas of significance and relevance to academia, industry, and society.</li> <li>➤ Ensure the research centers are equipped with necessary infrastructure, including office space, research laboratories, computing facilities, and access to relevant research tools and resources.</li> <li>➤ Develop research policies and guidelines specific to the unaided stream research centers. These policies should outline the expectations, responsibilities, and ethical considerations for faculty and students involved in research activities. Emphasize the importance of quality research, adherence to research ethics, and</li> </ul>	<p>2026</p>



	<p>the dissemination of research findings.</p> <ul style="list-style-type: none"> <li>➤ Encourage interdisciplinary collaboration by fostering partnerships within and outside the college. Establish collaborations with industry, other research institutions, and government bodies to facilitate joint research projects, funding opportunities, and knowledge exchange.</li> <li>➤ Promote a research culture by organizing research seminars, conferences, and symposiums within the unaided stream research centers.</li> <li>➤ Establish recognition and reward mechanisms to acknowledge and celebrate research excellence within the unaided stream.</li> </ul>	
<p>Foster partnerships with reputed international universities and institutions for student and faculty exchange programs, joint research initiatives, and collaborative academic programs</p>	<ul style="list-style-type: none"> <li>➤ Conduct thorough research to identify reputed international universities and institutions that align with the college's academic programs, research interests, and cultural exchange objectives. Consider factors such as academic reputation, program compatibility, research collaboration potential, and existing partnerships of the identified institutions.</li> <li>➤ Reach out to the identified international universities and institutions through formal communication channels, including emails, letters, or online platforms.</li> </ul>	<p>2027</p>





	<ul style="list-style-type: none"> <li>➤ Establish formal MoUs with the selected international partners.</li> <li>➤</li> </ul>	
<p>Develop and expand more sophisticated online learning platforms and resources to cater to the evolving needs of students and faculty and to fulfil the requirements of NEP</p>	<ul style="list-style-type: none"> <li>➤ Conduct a comprehensive needs assessment to identify the specific requirements of students, faculty, and educational institutions.</li> <li>➤ Gather feedback from various stakeholders, including students, teachers, administrators, and policymakers.</li> <li>➤ Identify the challenges faced in the current online learning environment and opportunities for improvement.</li> <li>➤ Assess the existing technology infrastructure and identify any gaps or limitations.</li> <li>➤ Invest in robust and scalable online learning platforms that can accommodate a large number of users and offer advanced features.</li> <li>➤ Ensure the platforms are compatible with multiple devices (e.g., desktops, laptops, tablets, and smartphones) to facilitate access for all learners.</li> <li>➤ Implement measures to enhance data security and privacy to protect sensitive student and faculty information.</li> <li>➤ Assess the existing technology infrastructure and identify any gaps or limitations.</li> </ul>	<p>2026</p>



	<ul style="list-style-type: none"> <li>➤ Invest in robust and scalable online learning platforms that can accommodate a large number of users and offer advanced features.</li> <li>➤ Ensure the platforms are compatible with multiple devices (e.g., desktops, laptops, tablets, and smartphones) to facilitate access for all learners.</li> <li>➤ Implement measures to enhance data security and privacy to protect sensitive student and faculty information.</li> <li>➤ Assess the existing technology infrastructure and identify any gaps or limitations.</li> <li>➤ Invest in robust and scalable online learning platforms that can accommodate a large number of users and offer advanced features.</li> <li>➤ Ensure the platforms are compatible with multiple devices (e.g., desktops, laptops, tablets, and smartphones) to facilitate access for all learners.</li> <li>➤ Implement measures to enhance data security and privacy to protect sensitive student and faculty information.</li> <li>➤ Assess the existing technology infrastructure and identify any gaps or limitations.</li> <li>➤ Invest in robust and scalable online learning platforms that can</li> </ul>	
--	--	--



	<p>accommodate a large number of users and offer advanced features.</p> <ul style="list-style-type: none"> <li>➤ Ensure the platforms are compatible with multiple devices (e.g., desktops, laptops, tablets, and smartphones) to facilitate access for all learners.</li> <li>➤ Implement measures to enhance data security and privacy to protect sensitive student and faculty information.</li> <li>➤ Engage with policymakers and education authorities to advocate for supportive policies and regulations that promote online learning.</li> </ul>	
<p>Invest in improving the campus infrastructure by upgrading facilities, creating conducive learning environments, and implementing sustainable practices.</p>	<ul style="list-style-type: none"> <li>➤ Conduct a comprehensive assessment of the existing campus infrastructure, including classrooms, laboratories, libraries, study areas, recreational spaces, and common facilities.</li> <li>➤ Identify areas that require immediate attention and prioritize them based on the level of need, impact on student learning experience, and available resources.</li> <li>➤ Allocate sufficient funds and resources to initiate the upgrades and improvements.</li> </ul>	<p>2026</p>



	<ul style="list-style-type: none"> <li>➤ Upgrade equipment and tools to align with the latest advancements in the respective fields.</li> <li>➤ Ensure adequate safety measures and compliance with regulatory standards.</li> <li>➤ Improve outdoor areas by creating green spaces, walking paths, and seating arrangements.</li> <li>➤ Enhance indoor recreational facilities such as gyms, sports halls, and fitness centers.</li> <li>➤ Regularly monitor and evaluate the impact of facility upgrades and sustainability initiatives.</li> <li>➤ Collect feedback from students, faculty, and staff to assess their satisfaction and identify areas for further improvement.</li> </ul>	
<p>Strengthen the college's engagement with the local community by developing outreach programs, social initiatives, and partnerships with NGOs, government bodies, and local businesses.</p>	<ul style="list-style-type: none"> <li>➤ Conduct a needs assessment to identify the specific needs, challenges, and opportunities within the local community.</li> <li>➤ Engage with community leaders, NGOs, government bodies, and local businesses to gather insights and understand the community's priorities.</li> <li>➤ Identify key areas where the college can contribute and make a positive impact based on its expertise, resources, and mission.</li> </ul>	<p>2027</p>



	<ul style="list-style-type: none"> <li>➤ Conduct a needs assessment to identify the specific needs, challenges, and opportunities within the local community.</li> <li>➤ Engage with community leaders, NGOs, government bodies, and local businesses to gather insights and understand the community's priorities.</li> <li>➤ Identify key areas where the college can contribute and make a positive impact based on its expertise, resources, and mission.</li> <li>➤ Conduct a needs assessment to identify the specific needs, challenges, and opportunities within the local community.</li> <li>➤ Engage with community leaders, NGOs, government bodies, and local businesses to gather insights and understand the community's priorities.</li> <li>➤ Identify key areas where the college can contribute and make a positive impact based on its expertise, resources, and mission.</li> <li>➤</li> </ul>	
<p>Implement sustainable practices across the campus, including energy conservation, waste management, water harvesting, and promoting eco-friendly initiatives.</p>	<ul style="list-style-type: none"> <li>➤ Conduct a comprehensive assessment of the campus's current energy usage, waste management practices, water consumption, and environmental impact.</li> <li>➤ Set clear sustainability goals and objectives, considering factors such as reducing carbon emissions,</li> </ul>	<p>2028</p>





	<p>minimizing waste generation, conserving resources, and promoting eco-friendly initiatives.</p> <ul style="list-style-type: none"> <li>➤ Create a sustainability committee or task force comprising representatives from various campus departments to oversee the planning and implementation of sustainable practices.</li> <li>➤ Identify energy-saving opportunities and implement measures to reduce energy consumption across campus buildings and facilities.</li> <li>➤ Conduct energy audits to identify areas of inefficiency and prioritize energy-saving initiatives.</li> <li>➤ Identify energy-saving opportunities and implement measures to reduce energy consumption across campus buildings and facilities.</li> <li>➤ Conduct energy audits to identify areas of inefficiency and prioritize energy-saving initiatives.</li> <li>➤ Install motion sensors and timers to control lighting in less frequently used areas.</li> <li>➤ Raise awareness among staff and students about turning off lights when not in use.</li> <li>➤ Implement regular maintenance and tune-ups of heating, ventilation, and air conditioning (HVAC) systems.</li> </ul>	
--	---	--



	<ul style="list-style-type: none"> <li>➤ Educate the campus community about the benefits and importance of renewable energy.</li> <li>➤ Develop and implement a comprehensive waste management plan to reduce waste generation, promote recycling, and minimize the environmental impact of waste disposal.</li> <li>➤ Implement water conservation measures to reduce water consumption and promote responsible water use across campus.</li> </ul>	
<p>Provide professional development opportunities for faculty members to enhance their teaching methodologies, research capabilities, and technological competencies.</p>	<ul style="list-style-type: none"> <li>➤ Conduct a comprehensive needs assessment to identify the specific areas where faculty members require professional development support.</li> <li>➤ Analyze the needs assessment data to identify common themes, prioritize areas of focus, and set clear professional development goals.</li> <li>➤ Based on the identified needs and goals, design a range of workshops and training programs that cater to faculty members' professional development requirements.</li> <li>➤ Collaborate with internal and external experts, instructional designers, and educational consultants to develop engaging and effective professional development content.</li> </ul>	<p>2026</p>



	<ul style="list-style-type: none"> <li>➤ Regularly evaluate the effectiveness and impact of the professional development programs offered to faculty members.</li> <li>➤ Gather feedback from participants through surveys, focus groups, or individual interviews to assess their satisfaction, learning outcomes, and the application of new knowledge and skills.</li> <li>➤ Analyze evaluation data to identify areas of improvement and make necessary adjustments to future professional development initiatives.</li> <li>➤ Recognize and appreciate faculty members' active participation in professional development activities.</li> <li>➤ Establish a system of rewards and incentives to acknowledge faculty members' efforts in enhancing their teaching methodologies, research capabilities, and technological competencies.</li> </ul>	
--	--	--



## LONG TERM KEY STRATEGIC PLAN

STRATEGY	ACTION PLAN	TARGET YEAR
<p>Establish centres of excellence in selected fields of study, such as science, technology, arts, or business. These centers should have state-of-the-art facilities, cutting-edge research, collaborations with industry and academia, and renowned faculty.</p>	<ul style="list-style-type: none"> <li>➤ Conduct a thorough analysis of the college's strengths, faculty expertise, and industry demands to determine the key fields of study for establishing centers of excellence.</li> <li>➤ Consider emerging disciplines, societal needs, and market demands to ensure the relevance and impact of the centers.</li> <li>➤ Allocate sufficient resources, including funding, infrastructure, and faculty support, to establish and sustain the centers of excellence.</li> <li>➤ Seek external funding through grants, partnerships with industry, government agencies, or philanthropic organizations.</li> <li>➤ Prioritize investment in state-of-the-art facilities, equipment, and technology required for cutting-edge research and education in the chosen fields.</li> <li>➤ Attract renowned faculty members with expertise and research excellence in the selected fields.</li> <li>➤ Establish strong collaborations with industry partners to ensure the centers' research and programs are aligned with industry needs.</li> <li>➤ Foster mutually beneficial relationships through research</li> </ul>	<p>2030</p>



	<p>collaborations, internships, guest lectures, and joint projects.</p> <ul style="list-style-type: none"> <li>➤ Encourage industry experts to serve as adjunct faculty or mentors, providing real-world insights and industry-relevant guidance.</li> <li>➤ Foster collaborations with other academic institutions, both nationally and internationally, to leverage expertise, resources, and research opportunities.</li> <li>➤ Establish joint research programs, exchange programs for faculty and students, and collaborative projects.</li> <li>➤ Encourage and support faculty and students to engage in cutting-edge research within the centers of excellence.</li> <li>➤ Foster a research-driven culture through research grants, incentives for publications, and access to research facilities and resources.</li> <li>➤ Establish interdisciplinary research teams and promote collaboration across different fields of study within the centers.</li> <li>➤ Organize conferences, symposiums, and workshops to showcase the centers' research and promote knowledge sharing.</li> <li>➤ Engage with the local community through outreach programs, public lectures, and collaborations with local organizations and schools.</li> </ul>	
--	---	--





	<ul style="list-style-type: none"> <li>➤ Promote the centers' achievements and impact through publications, media coverage, and digital platforms to enhance their visibility and reputation.</li> <li>➤ Establish mechanisms to monitor and evaluate the performance and impact of the centers of excellence.</li> </ul>	
<p>Develop a strong global outreach program by promoting international collaborations, student and faculty exchange programs, and joint research projects with prestigious universities and institutions around the world.</p>	<ul style="list-style-type: none"> <li>➤ Conduct extensive research to identify prestigious universities and institutions around the world that align with the college's mission, values, and academic programs.</li> <li>➤ Consider factors such as the institutions' strengths, expertise, reputation, research focus areas, and compatibility with the college's fields of study.</li> <li>➤ Reach out to the identified institutions through official correspondence, introductions from mutual contacts, or participation in international conferences and events.</li> <li>➤ Try for an MoU.</li> <li>➤ Design and implement student exchange programs that enable</li> </ul>	<p>2029</p>



	<p>students to study abroad at partner institutions and vice versa.</p> <ul style="list-style-type: none"> <li>➤ Establish a support system to assist students with the application process, visa procedures, travel arrangements, housing, and academic guidance throughout their exchange experience.</li> <li>➤ Encourage faculty members to participate in exchange programs, research visits, and collaborative projects with partner institutions.</li> <li>➤ Encourage joint supervision of graduate students, co-authoring research publications, and sharing of teaching and research methodologies.</li> <li>➤ Promote joint research projects between faculty members of the college and partner institutions.</li> <li>➤ Identify common research interests and areas of expertise to facilitate collaborative research proposals.</li> <li>➤ Seek funding opportunities, both locally and internationally, to support joint research projects and foster research excellence.</li> <li>➤ Organize cultural exchange events, seminars, and workshops to foster cross-cultural understanding and appreciation.</li> </ul>	
--	--	--



	<ul style="list-style-type: none"> <li>➤ Create opportunities for students and faculty to share their international experiences and research findings through presentations, exhibitions, and publications.</li> <li>➤ Leverage digital platforms, social media, and the college's website to showcase international collaborations, joint projects, and successful outcomes.</li> <li>➤ Establish mechanisms to evaluate the effectiveness and impact of international collaborations, student and faculty exchange programs, and joint research projects.</li> </ul>	
<p>Provide resources, mentorship, and networking opportunities for aspiring entrepreneurs, and establish partnerships with industry and start-ups to facilitate real-world learning experiences.</p>	<ul style="list-style-type: none"> <li>➤ Establish an Entrepreneurship Resource Center</li> <li>➤ Create a dedicated physical or virtual space where aspiring entrepreneurs can access resources, tools, and information related to entrepreneurship.</li> <li>➤ Develop a comprehensive collection of resources, including business plan templates, market research databases, funding guides, and success stories of entrepreneurs.</li> <li>➤ Provide access to relevant software, technology platforms, and market research tools to support business development.</li> <li>➤ Engage experienced entrepreneurs, industry professionals, and successful</li> </ul>	<p>2031</p>



	<p>alumni as mentors for aspiring entrepreneurs.</p> <ul style="list-style-type: none"> <li>➤ Organize workshops and training programs on various aspects of entrepreneurship, such as idea validation, business planning, financial management, marketing, and pitching.</li> <li>➤ Invite guest speakers, industry experts, and successful entrepreneurs to share their experiences and insights.</li> <li>➤ Provide opportunities for hands-on learning through activities like business simulations, hackathons, and pitch competitions.</li> <li>➤ Ensure Industry Partnerships and Real-World Learning Experiences.</li> </ul>	
<p>Develop lifelong learning programs and continuing education opportunities for alumni and professionals in the region. Offer certificate programs, executive education, and skill development courses that cater to the changing needs of the industry.</p>	<ul style="list-style-type: none"> <li>➤ Conduct market research and engage with industry experts to identify the current and emerging needs of professionals in the region. Understand the skill gaps and areas of expertise that are in high demand.</li> <li>➤ Design and develop a series of certificate programs that address the identified needs of professionals. These programs should offer specialized knowledge and practical skills in areas such as technology, leadership, project management, data analytics, and entrepreneurship. Ensure the programs are structured to accommodate both in-person and online learning options.</li> </ul>	<p>2029</p>



	<ul style="list-style-type: none"> <li>➤ Create executive education programs tailored for experienced professionals and executives. These programs should focus on advanced leadership skills, strategic thinking, and industry-specific knowledge.</li> <li>➤ Offer a variety of skill development courses that cater to different levels of expertise and interests.</li> <li>➤ Establish partnerships with local businesses, organizations, and industry associations. partnerships can also provide opportunities for internships, mentorships, and networking events.</li> <li>➤ Faculty Development: Invest in professional development programs for faculty members to ensure they are up to date with the latest industry practices and teaching methodologies. Encourage faculty members to engage in research and industry collaborations to bring real-world experiences into the classroom.</li> <li>➤ Alumni Engagement: Create a dedicated alumni network and engage with alumni through regular communication channels. Offer exclusive discounts, benefits, and networking events for alumni who enroll in lifelong learning programs. Leverage the expertise and experiences of alumni by inviting them as guest speakers or mentors in relevant programs.</li> <li>➤ Marketing and Outreach: Develop a comprehensive marketing and</li> </ul>	
--	---	--





	<p>outreach strategy to raise awareness about the lifelong learning programs and continuing education opportunities. Utilize digital marketing channels, social media platforms, email campaigns, and partnerships with local media outlets to reach the target audience. Highlight success stories and testimonials from program participants to showcase the value and impact of the programs.</p> <ul style="list-style-type: none"> <li>➤ Evaluation and Feedback: Implement an evaluation system to assess the effectiveness of the programs and collect feedback from participants. Use this feedback to continuously improve the program content, delivery methods, and overall learning experience.</li> <li>➤ Continuous Improvement: Stay updated with industry trends, technological advancements, and changes in the job market. Regularly review and update the program offerings to ensure they remain relevant and aligned with the evolving needs of professionals in the region.</li> </ul>	
--	--	--

